



1. WALL - METAL PANEL
 Manufacturer: Butler
 Material: Metal
 Profile: Butler Rib
 Finish: Prefinished
 Color: "Metallic Silver"



2. PLINTH
 Material: Cast-in-Place Concrete
 Finish: Architectural
 Color: Natural Concrete



3. SCREEN - PERFORATED PANEL
 Manufacturer: Span MBS
 Material: Aluminum
 Profile: 27% Open Area
 Finish: Powder Coated Aluminum
 Color: SW 7646 "First Star"



4. LED SIGN LIGHTING
 Manufacturer: Techlight
 Color: Bronze



5. CANOPY FRAME
 Material: Steel
 Finish: Painted
 Color: SW 7665 "Wall Street"



6. COPING
 Manufacturer: Butler
 Material: Metal
 Color: "Cool Harvest"



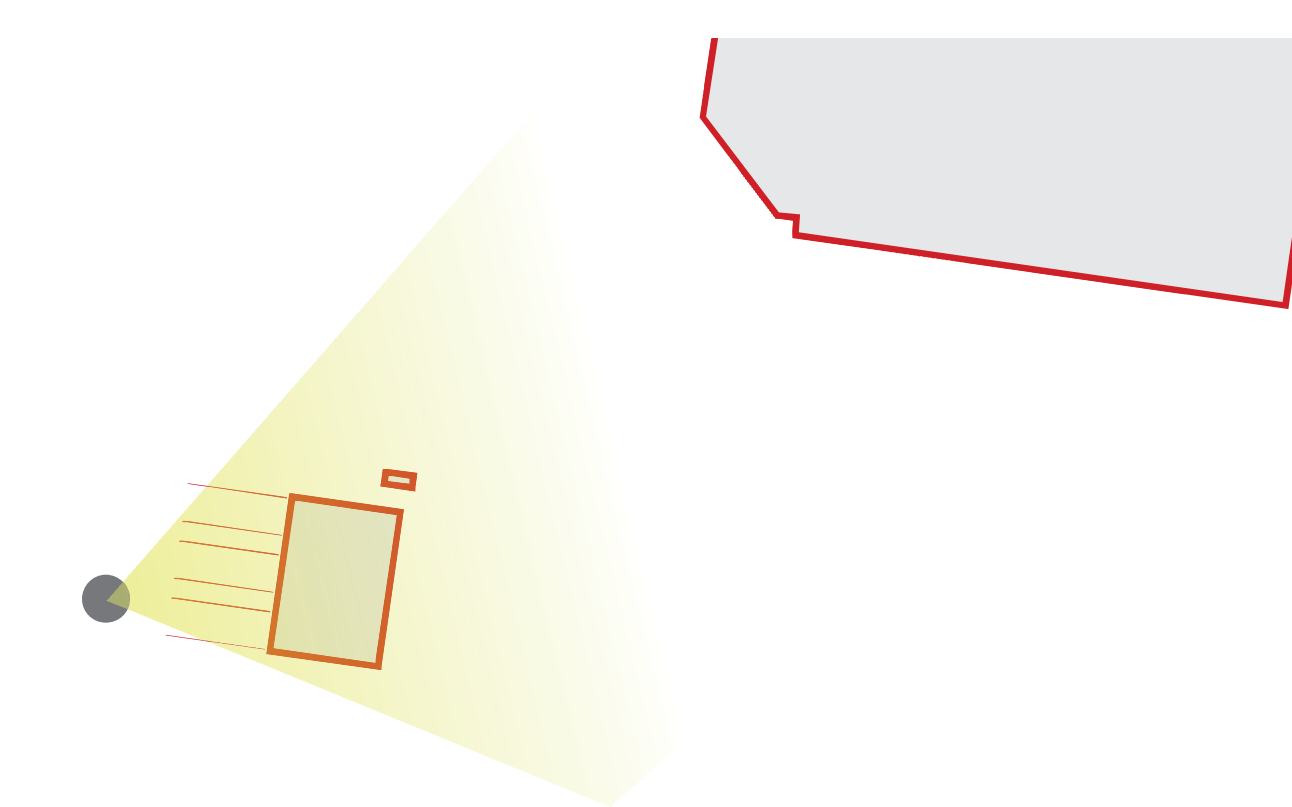
7. WALL - METAL PANEL
 Manufacturer: Butler
 Material: Metal
 Profile: Stylwall II
 Finish: Prefinished
 Color: "Taupe Light"

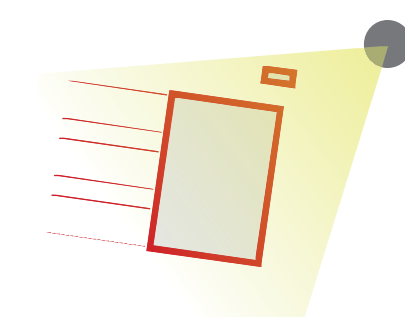
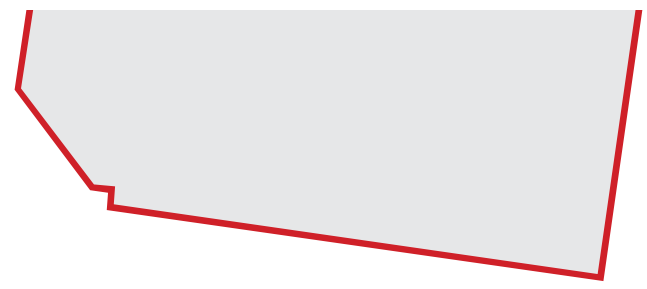


8. STEM WALL - CONCRETE
 Material: Cast-in-Place Concrete
 Finish: Architectural
 Color: Natural Concrete



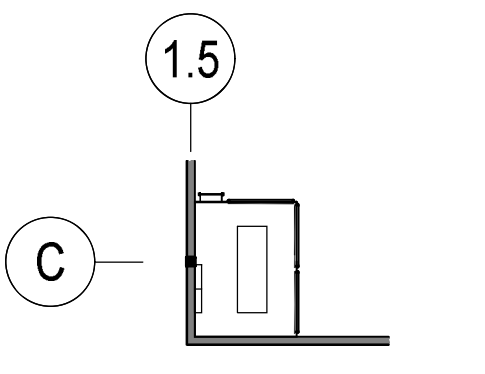
9. WALL - METAL PANEL
 Manufacturer: Butler
 Material: Metal
 Profile: Mega Rib
 Finish: Prefinished
 Color: "Mistique Plus"



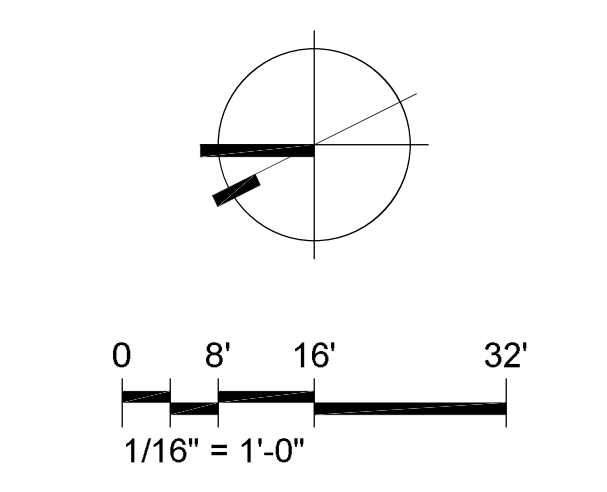


PROJECT DATA

NET WAREHOUSE AREA	147,217 SF
NET TIRE INSTALL	2,715 SF
NET MECHANICAL ROOM	1,424 SF
NET ENCLOSED CANOPY	3,480 SF
NET FIRE DEPT ROOM	395 SF
NET LIQUOR SALES	3,664 SF
NET TOTAL AREA	158,876 SF
ENVELOPE / EXTERIOR WALL	1,650 SF
TOTAL BUILDING - GROSS	160,525 SF



TIRE INSTALL PLATFORM
SCALE: 1/16" = 1'-0"



ALBANY, NEW YORK
148K + 3.6K LIQUOR

WESTERN AVENUE (ROUTE 20)
AND RAPP ROAD
ALBANY, NY

8444 Westpark Dr. Ste 120
McLean, VA 22102
703.564.8484
MG2.com

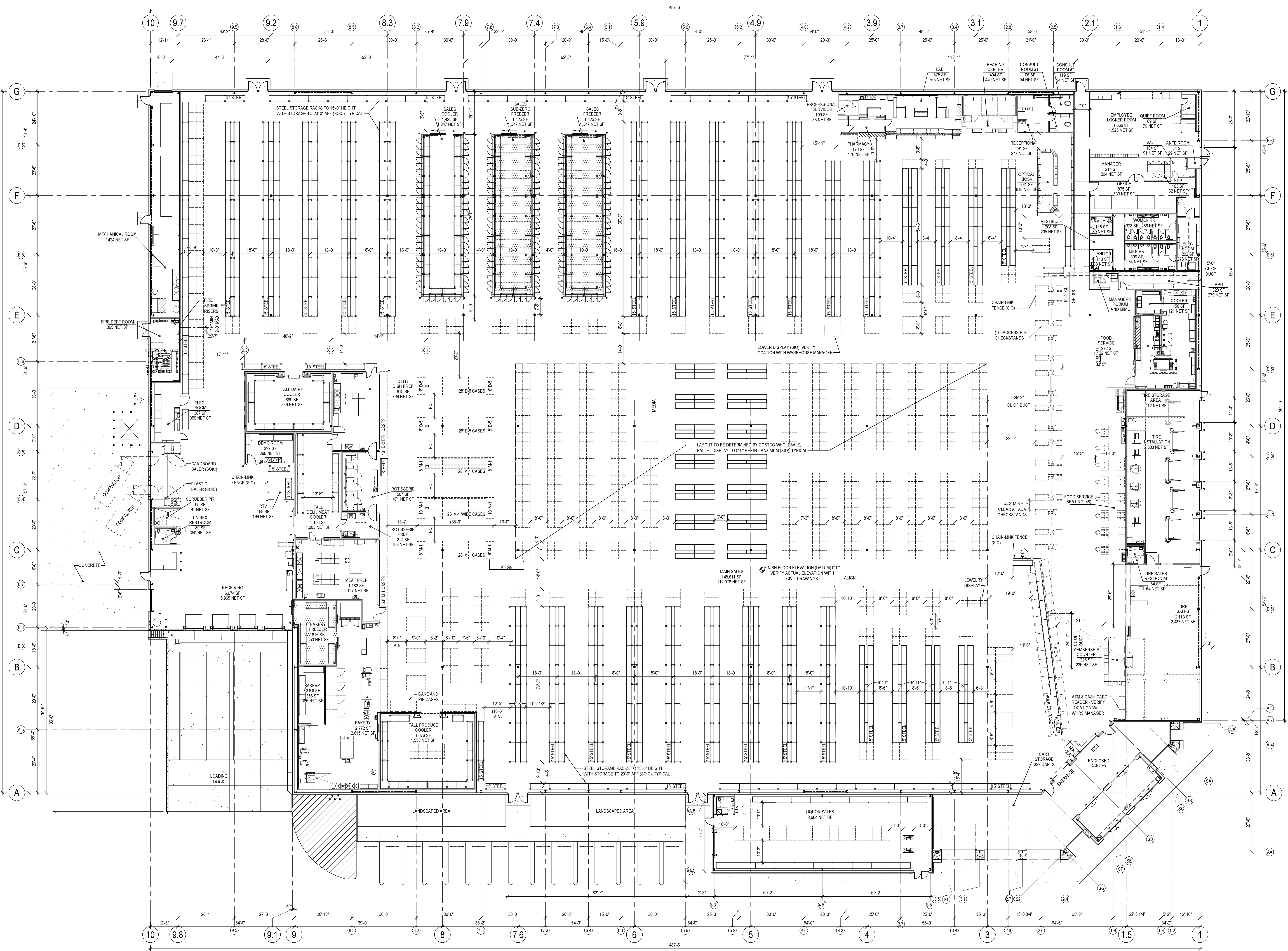


15-5147-01
MAY 24, 2019

FLOOR PLAN

DD2.1-15

MG2, Inc. All rights reserved. No part of this document may be reproduced or transmitted in any form or by any means without permission in writing from MG2.

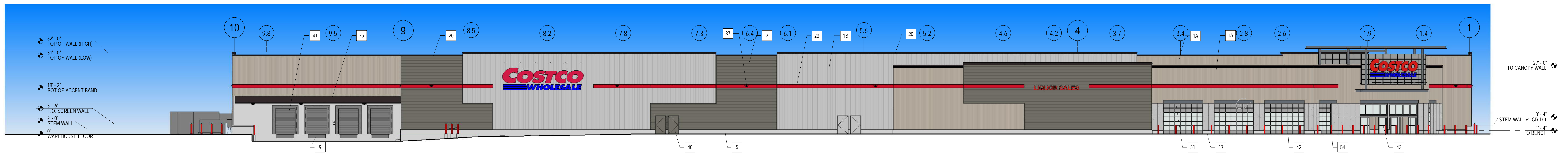


COSTCO WHOLESALE

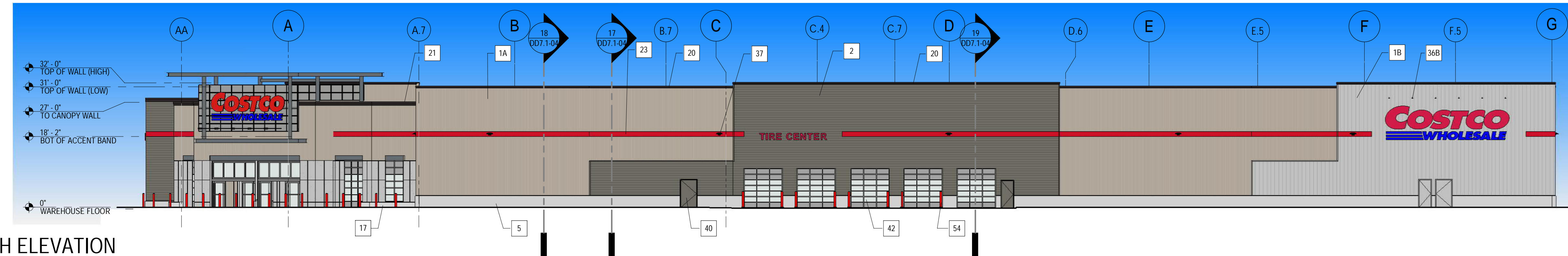
FLOOR PLAN

ALBANY, NEW YORK

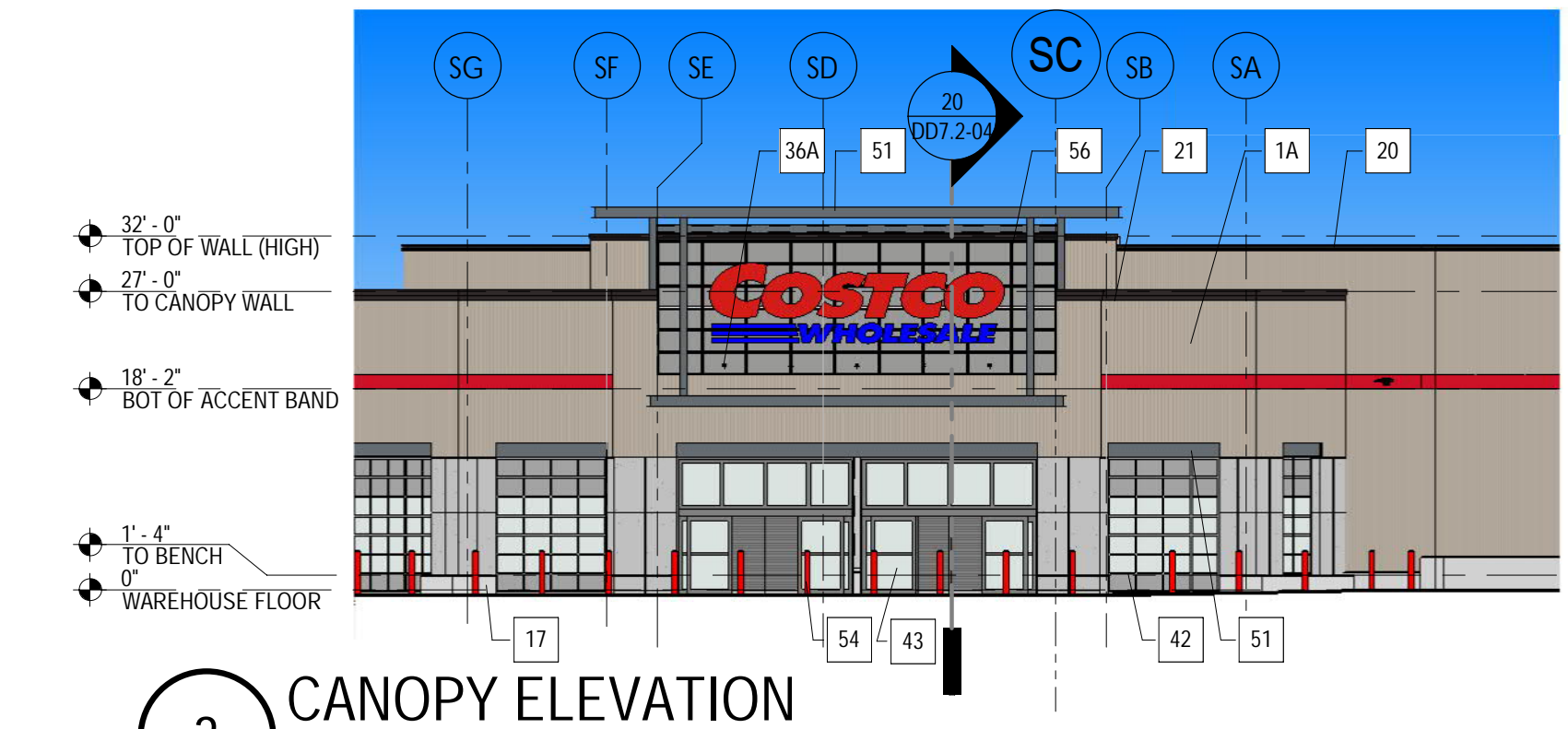
MAY 24, 2019



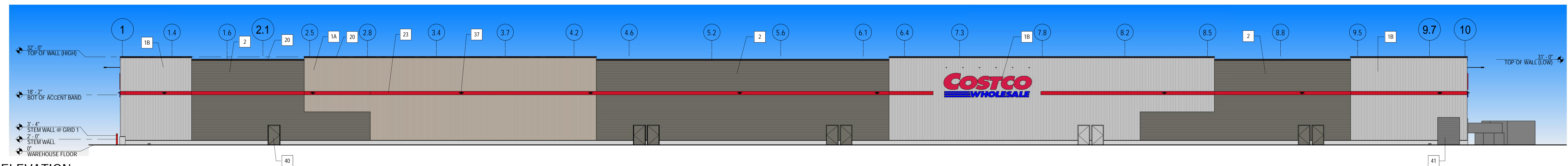
1 WEST ELEVATION
SCALE: 1/16" = 1'-0"



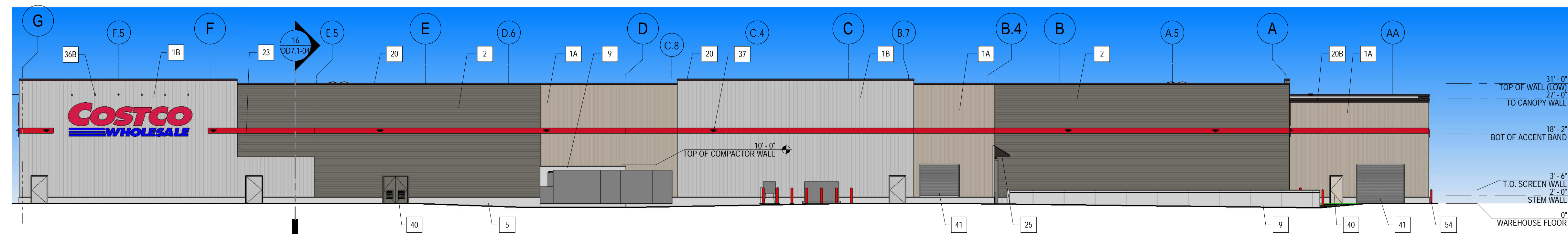
2 SOUTH ELEVATION
SCALE: 1/16" = 1'-0"



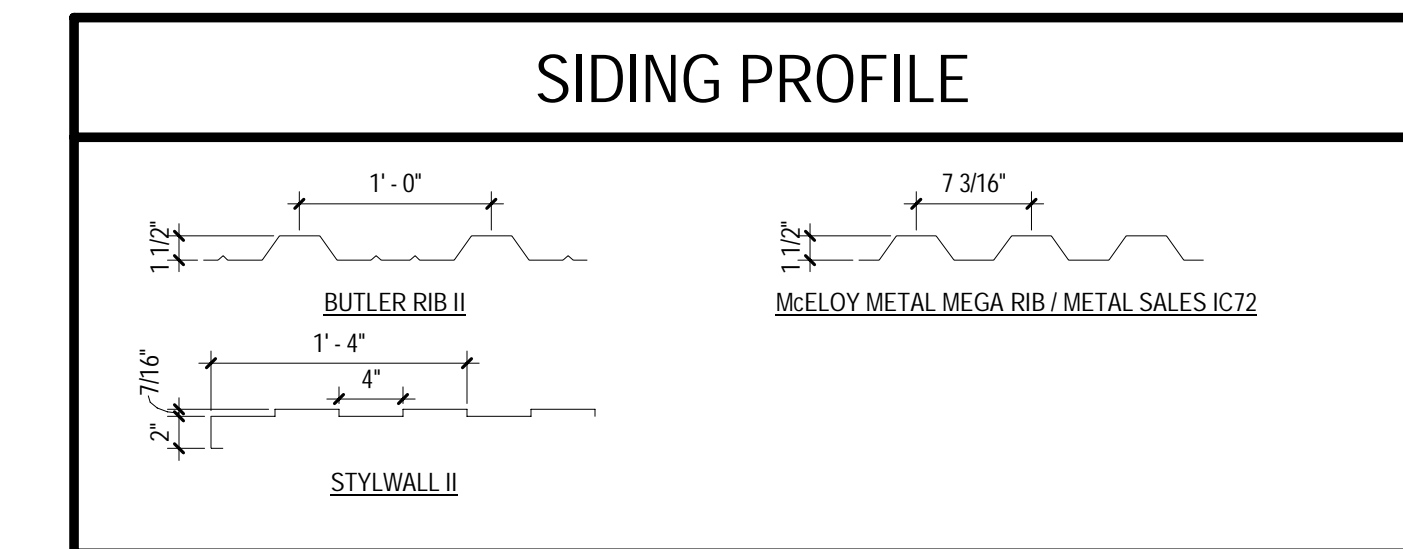
3 CANOPY ELEVATION
SCALE: 1/16" = 1'-0"



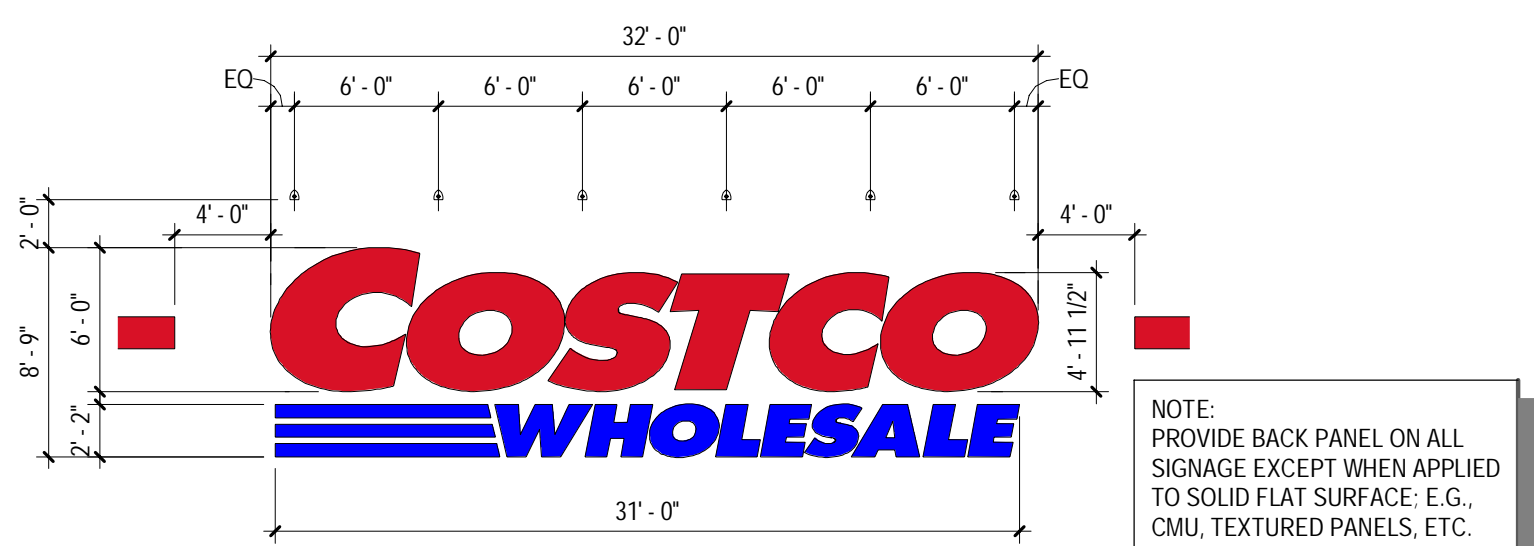
4 EAST ELEVATION
SCALE: 1/16" = 1'-0"



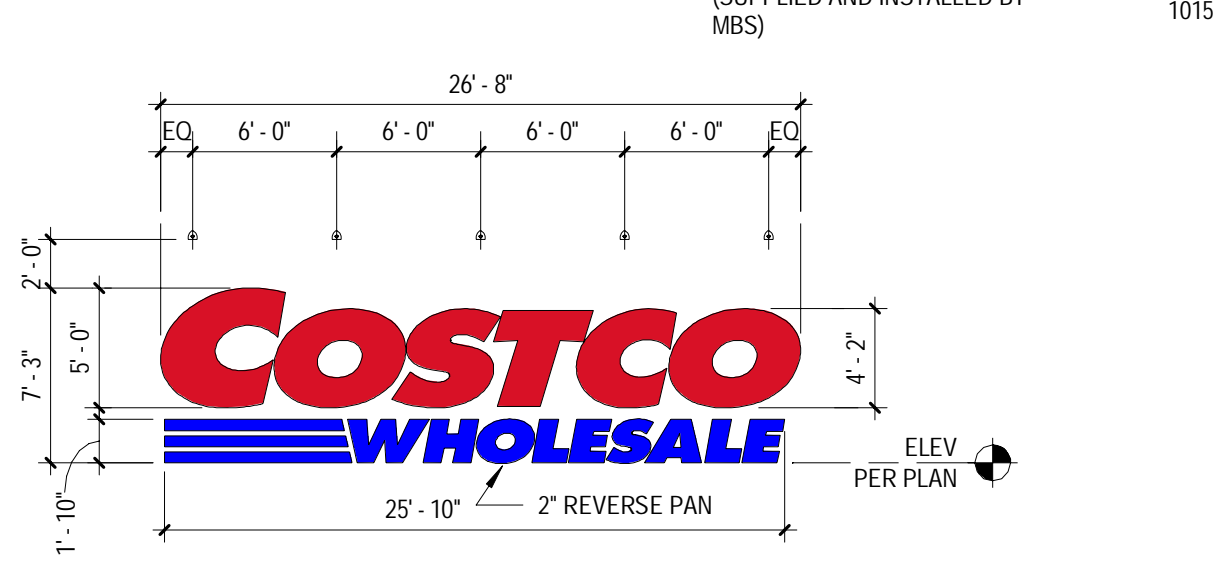
5 NORTH ELEVATION
SCALE: 1/16" = 1'-0"



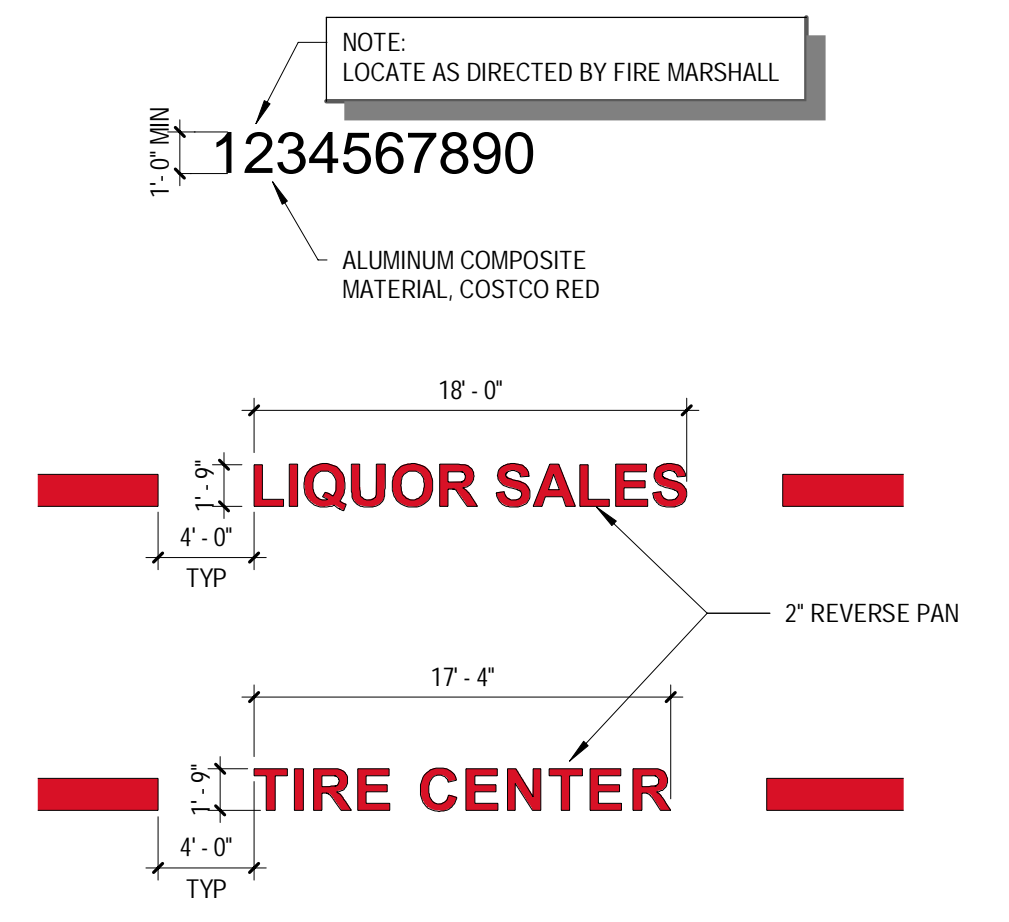
QTY	SIGN	SIZE	AREA (SF) EA	TOTAL SF
5	COSTCO WHOLESALE	6'-0" X 31'-0"	280 SF	1400
1	COSTCO WHOLESALE	5'-0" X 31'-0"	194 SF	194
1	LIQUOR SALES	18'-4" X 1'-9"	32 SF	32
1	TIRE CENTER	17'-4" X 1'-9"	31 SF	31
				1657



6 BUILDING SIGNAGE
SCALE: 1/8" = 1'-0"



7 CANOPY SIGNAGE
SCALE: 1/8" = 1'-0"



8 LOCATION SIGNAGE
SCALE: 1/8" = 1'-0"

#	ITEM	MATERIAL	FINISH	COLOR	MFR/NOTES
1A	METAL PANEL - STYLW II	METAL - VERTICAL	PRE-FINISHED	TAUPE LIGHT	BY MBS
1B	METAL PANEL - BR II	METAL - VERTICAL	PRE-FINISHED	METALLIC SILVER	BY MBS
2	METAL PANEL - MEGARB	METAL - HORIZONTAL	PRE-FINISHED	MISTIQUE PLUS	BY MBS
5	CONCRETE CAST-IN-PLACE STEM WALL	ARCHITECTURAL FINISH	WATER REPELLANT	NATURAL	
9	CONCRETE CAST-IN-PLACE WALL	ARCHITECTURAL FINISH	WATER REPELLANT	NATURAL	
20	COPING 1X6	METAL	PRE-FINISHED	COOL HARVEST	1
20B	COPING 1X6	METAL	PRE-FINISHED	COOL HARVEST	1
21	COPING 1X6	METAL	PRE-FINISHED	COOL HARVEST	1
21B	COPING 1X6	METAL	PRE-FINISHED	COOL HARVEST	1
23	ACCENT BAND	METAL	PRE-FINISHED	SAFETY RED	1

#	ITEM	MATERIAL	FINISH	COLOR	MFR/NOTES
17	COLUMN FLUSH / BENCH	CONCRETE	WATER REPELLANT		
25	STANDING SEAM VSR	METAL	PRE-FINISHED	COOL HARVEST	
36A	CANOPY SIGN LIGHTING FIXTURE	METAL	PRE-FINISHED	TECHLIGHT BRONZE	
36B	SIGN LIGHTING FIXTURE	METAL	PRE-FINISHED	TECHLIGHT BRONZE	
37	WALL PACK FIXTURE	METAL	PRE-FINISHED	TECHLIGHT BRONZE	
41	ROLLING SERVICE DOOR	STEEL	PAINT BY GC	GRAY	2
42	GLAZED SECTIONAL DOOR	ALUMINUM	PRE-FINISHED	BRONZE	1
43	AUTO SLIDING DOOR	ALUMINUM	PRE-FINISHED	BRONZE	
51	ACCENT CHANNEL	STEEL	PAINT BY GC	SW 7665 WALL STREET	BY MBS
54	BOLLARD	STEEL PIPE CONCRETE FILL	PLASTIC SLEEVE	RED	2

COSTCO WHOLESALE
ALBANY, NEW YORK
148K

8444 Westpark Dr, Ste 120
McLean, VA 22102
703 564 8484
MG2.com



15-5147-01
APRIL 16, 2019

BUILDING ELEVATIONS

DD31-15

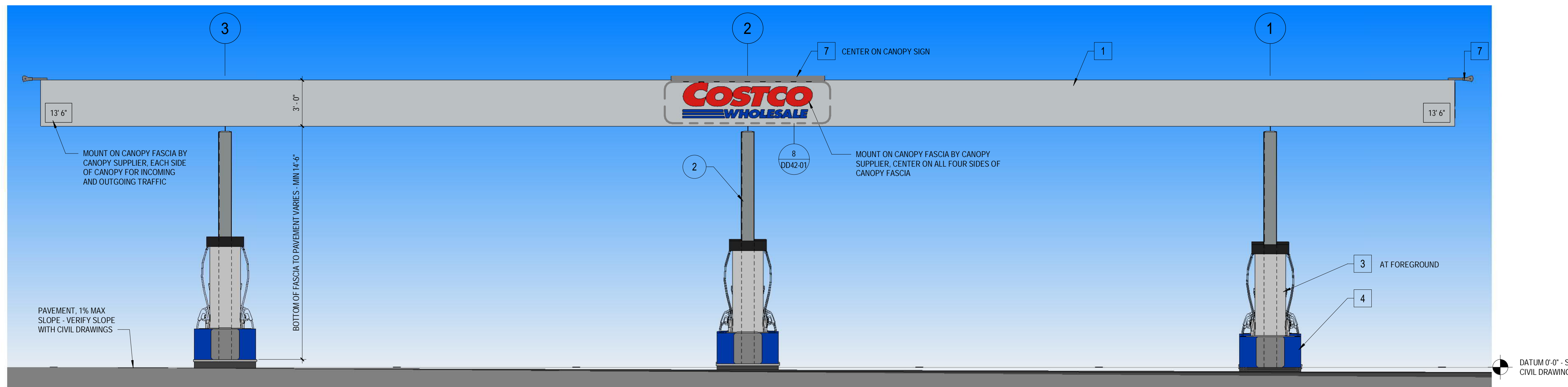
COSTCO WHOLESALE

ALBANY, NEW YORK

BUILDING ELEVATIONS

APRIL 16, 2019

© MG2, Inc. All rights reserved. No part of this document may be reproduced in any form or by any means without permission in writing from MG2.



SIGNAGE AREA TABULATION (CANOPY SIGNS)

QTY.	SIGN	DETAIL	SIZE	AREA (S.F.) EA.	TOTAL S.F.
1	COSTCO WHOLESALE (EAST FACADE)	8/DD42-02	2'-0" x 7'-0 1/4"	14.04 S.F.	14.04 S.F.
1	COSTCO WHOLESALE (WEST FACADE)	8/DD42-02	2'-0" x 7'-0 1/4"	14.04 S.F.	14.04 S.F.
1	COSTCO WHOLESALE (NORTH FACADE)	8/DD42-02	2'-0" x 7'-0 1/4"	14.04 S.F.	14.04 S.F.
1	COSTCO WHOLESALE (SOUTH FACADE)	8/DD42-02	2'-0" x 7'-0 1/4"	14.04 S.F.	14.04 S.F.
4	TOTAL SIGNAGE AREA				56.16 S.F.

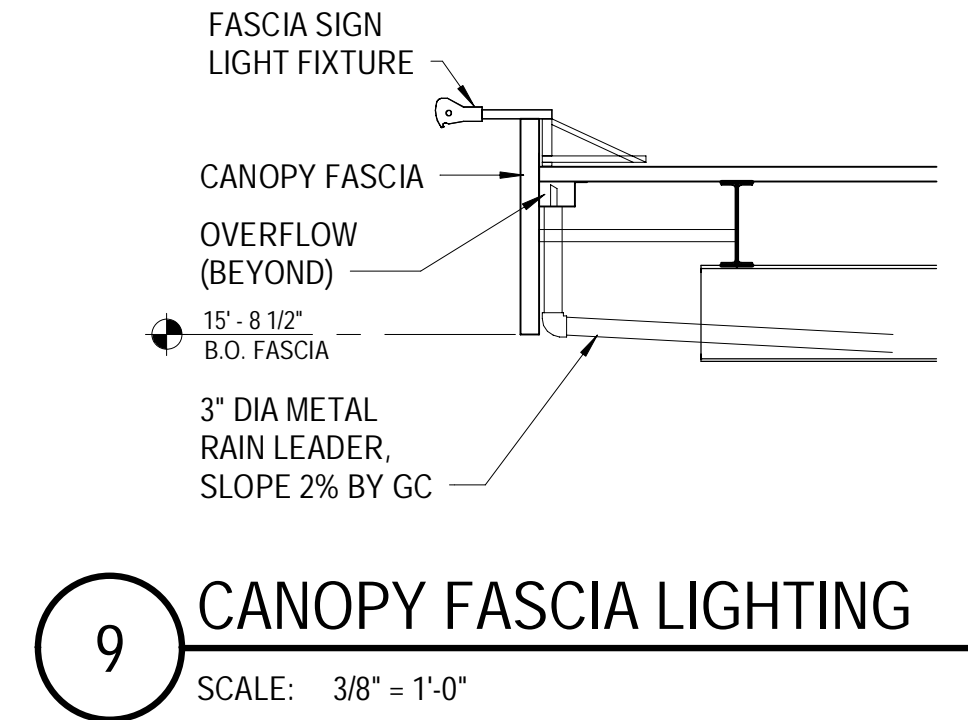
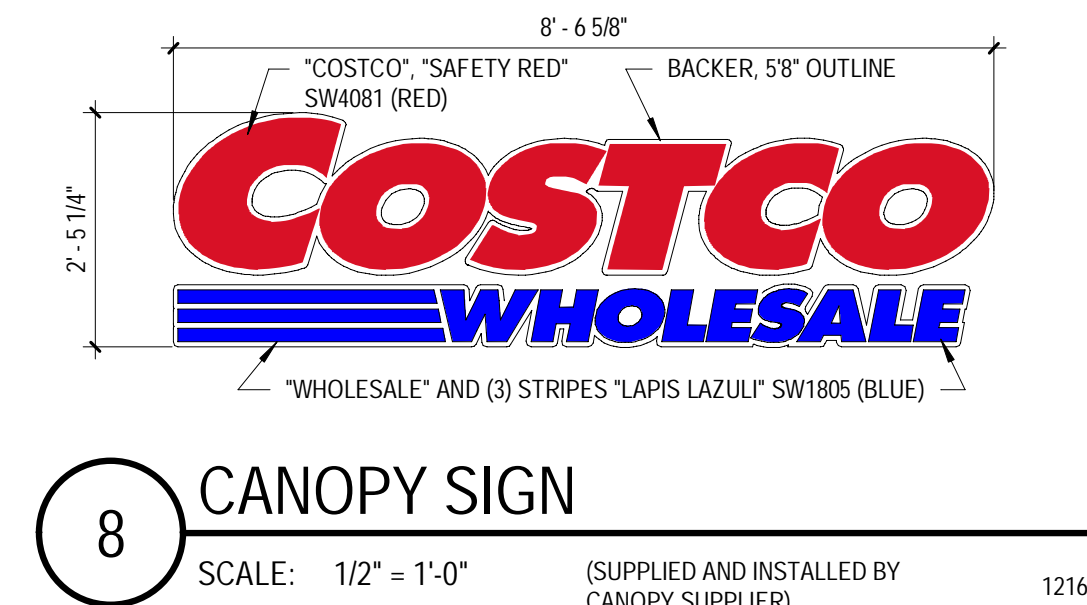
EXTERIOR FINISH SCHEDULE - FUEL

#	ITEM	MATERIAL	FINISH	COLOR	MANUFACTURER
1	FASCIA	METAL	KYNAR 500	MIRROR SILVER PCT75117	BY PPG
2	STEEL COLUMN	STEEL	STEEL GALVANIZED & PAINTED	FOG GRAY PCT170156	
3	CONTROLLER ENCLOSURE	METAL	KYNAR 500	FOG GRAY PCT170156	BY PPG

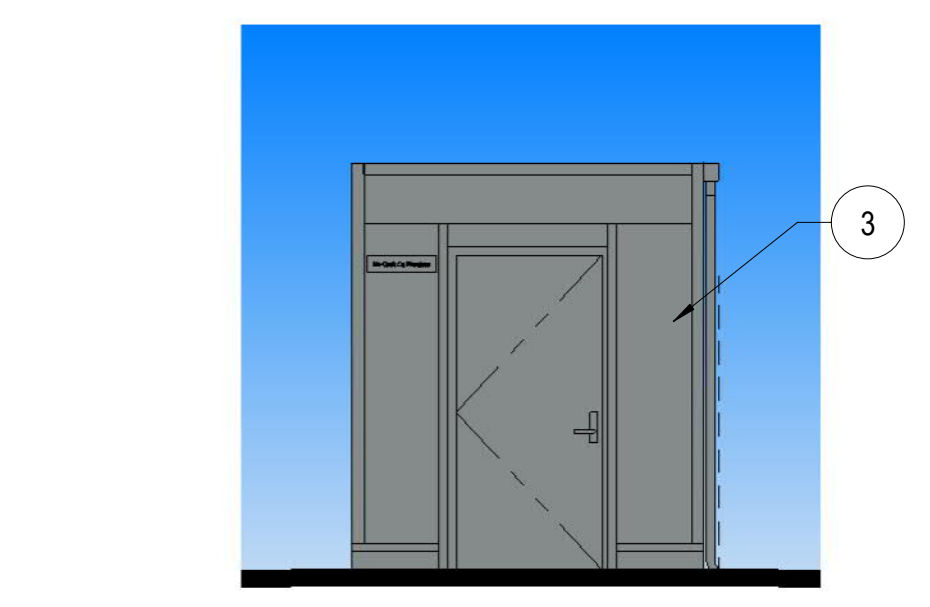
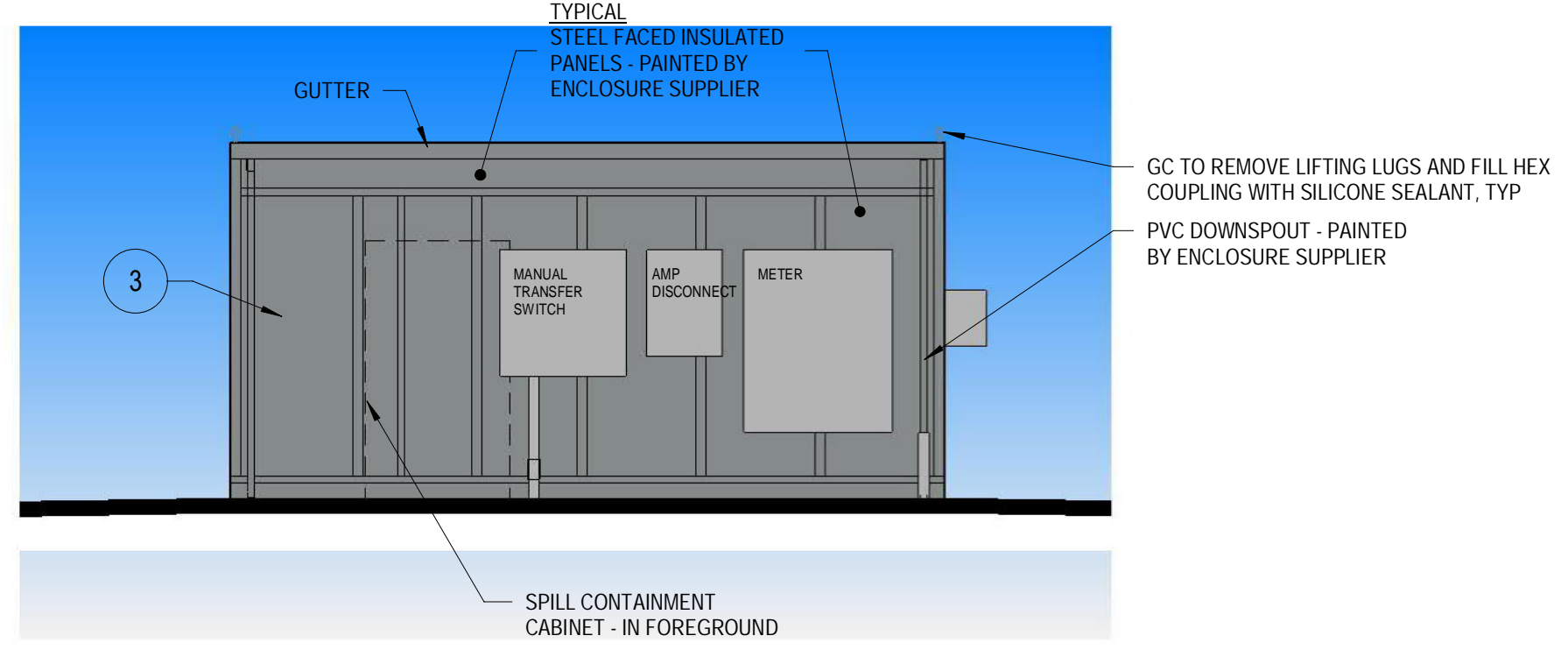
KEYNOTES

- PRE-FINISHED METAL FASCIA PANEL, COLOR MIRROR SILVER PCT75117 - SUPPLIED AND INSTALLED BY CANOPY SUPPLIER UNDER SEPARATE CONTRACT
- STEEL COLUMN
- MULTIPRODUCT DISPENSER
- CONCRETE-FILLED METAL FORMED GUARD AT ENDS OF ISLANDS - TOP OF GUARD AT 30" ABOVE TRAFFIC SURFACE - PAINT SIDE'S ONLY WITH GLOSS BLUE
- RAISED CONCRETE ISLAND WITH METAL EDGE FORM - PAINT SIDE'S ONLY WITH GLOSS BLACK
- WASTE RECEPTOR, BOLT DOWN, CENTER OF EACH ISLAND (SOIC)
- CANOPY FASCIA SIGN LIGHT FIXTURE
- FIRE EXTINGUISHER AND CABINETS MOUNTED ON ENTRANCE SIDE OF COLUMNS - FIRE EXTINGUISHER CABINET TO BE: BROOKS MODEL # MARK II, RED CABINET WITH CLEAR COVER (OR EQUAL) - FIRE EXTINGUISHER AND CABINET, BY GC
- VIDEO CAMERA - VERIFY LOCATION WITH OWNER CONSTRUCTION PROJECT MANAGER. GC SHALL RUN CONDUIT AND INSTALL 3" ROUND OR OCTAGONAL J-BOX FOR MOUNTING CAMERAS - SEE ELECTRICAL DRAWINGS

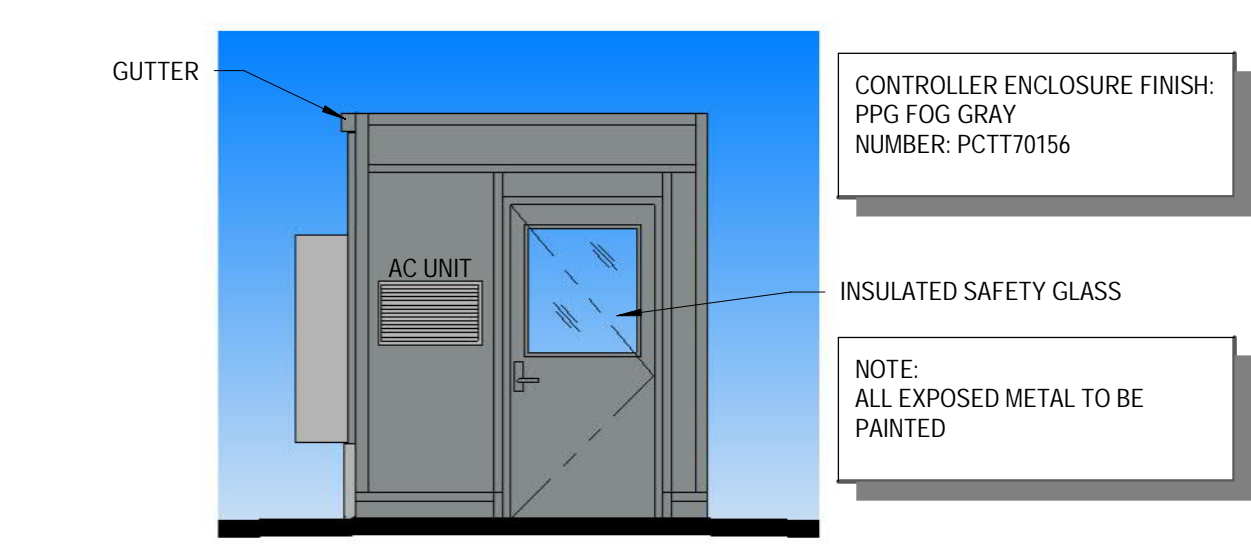
1 CANOPY AND DISPENSER ISLANDS
SCALE: 1/4" = 1'-0"



2 CANOPY AND DISPENSER ISLANDS
SCALE: 1/4" = 1'-0"

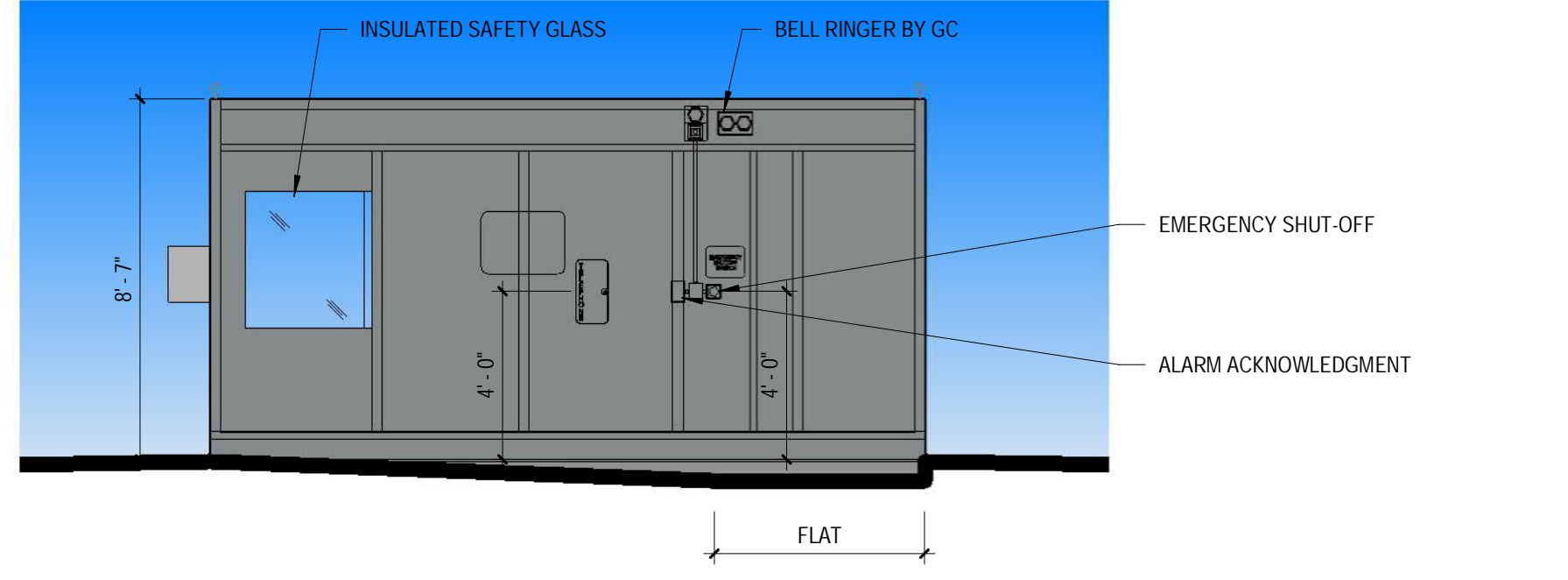


4 ELECTRICAL ENTRY
SCALE: 1/4" = 1'-0"

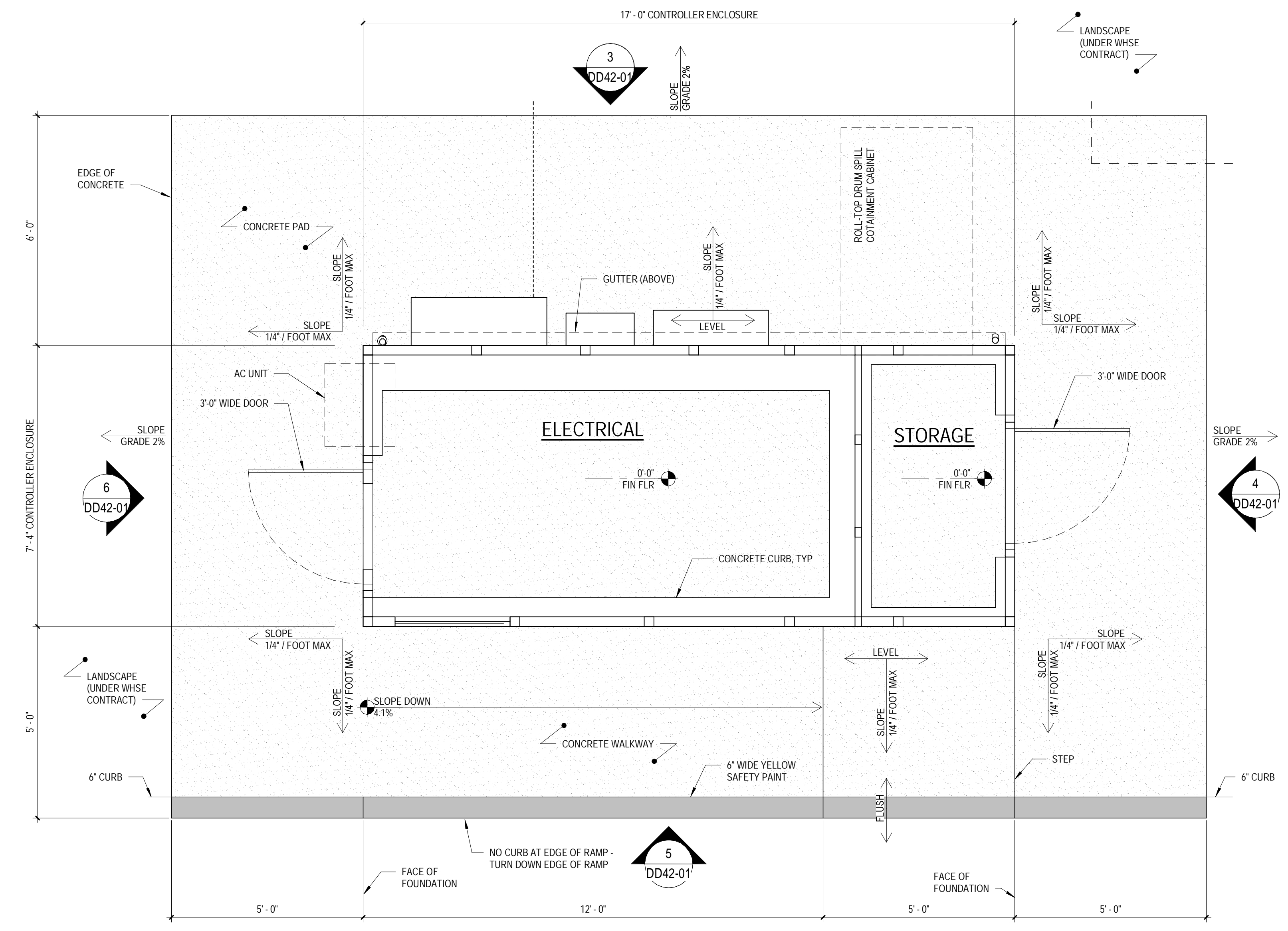


6 STORAGE ENTRY
SCALE: 1/4" = 1'-0"

3 SIDE FACING AWAY FROM CANOPY
SCALE: 1/4" = 1'-0"



5 SIDE FACING CANOPY
SCALE: 1/4" = 1'-0"



COSTCO WHOLESALE
ALBANY, NY
15-5147-01

8444 Westpark Dr, Ste 120
McLean, VA 22102
703 564 8484
MG2.com

MG2

15-5147-01
FEBRUARY 1, 2019

FUEL FACILITY

DD42-01

COSTCO WHOLESALE

ALBANY, NY

FUEL FACILITY

FEBRUARY 1, 2019

© MG2, Inc. All rights reserved. No part of this document may be reproduced in any form or by any means without permission in writing from MG2.